



Martin County School District

Automated External Defibrillator (AED) Program

Purpose:

The Martin County School District has established an Automated External Defibrillator (AED) Program to enable targeted responders in the school setting to deliver early defibrillation to victims in the first critical moments of a sudden cardiac arrest. Responders' use of the AED should not replace the care provided by emergency medical services (EMS) providers, but it is meant to provide a lifesaving bridge during the first critical minutes it takes for advanced life support providers to arrive. Upon arrival of the EMS providers, patient care will be transferred to the EMS personnel.

The Program includes: stationing an AED at schools with specialized training for individuals (responders) in CPR and AED operation; and inspection and maintenance procedures for the AED devices. The AED Program operates under the direction and authorization of Dr. Lillian Avner, Martin Memorial, Stuart, FL.

What are AEDs and how do they work?

Automated External Defibrillators (AEDs) are a proven method of reducing morbidity and mortality from acute myocardial infarction (heart attack). An AED is a device that attaches to a victim's chest to assess the heart's rhythm and, if needed, recommend that a shock be delivered to correct the heart's rhythm. An adult, and in some cases, a student who has just gone into sudden cardiac arrest (i.e., cessation of a heartbeat most commonly due to a heart attack) is most likely in urgent need of defibrillation, a metered electrical charge that can restore the heart to healthy function and save a life. To provide a realistic chance of survival, defibrillation must be available soon after the onset of cardiac arrest.

AED Location

The AED(s) will be stationed in areas based on the type of school and expected activities. The AED must be accessible during all hours that the school is occupied. High Schools and Middle schools will have an AED accessible for athletic programs. The Athletic Director or middle school administrator will be responsible ensuring an AED is at all athletic functions.

The location of any and all AEDs must be provided to the local EMS personnel. Any time an AED is relocated, the EMS must be notified immediately. The Principal or designee will be responsible for ensuring that the local EMS is notified of the location of any AED. See APPENDIX A for notification form.

Procedures for Training and Testing in the Use of AED

Per the Medical Director personnel using the AED must complete an American Heart Association (AHA/CPR/AED) Program and have a current certification to include instruction in:

- The proper use, maintenance and periodic inspection of the AED.
- Defibrillator safety precautions to enable the user to administer a shock without jeopardizing the safety of the patient, user or other persons.
- Assessment of an unconscious person to determine if cardiac arrest has occurred and the appropriateness of applying an AED.
- Recognizing that an electrical shock has been delivered to the patient and that the defibrillator is no longer charged.
- Rapid, accurate assessment of the patient's post shock status to determine if further activation of the AED is necessary.
- The operations of the local emergency medical services system, including methods of access to the emergency response system, and interaction with emergency services personnel.
- The role of the user and coordination with other emergency medical service providers in the provision of CPR, defibrillation, basic life support and advanced life support.

- The responsibility of the user to continue care until the arrival of medically qualified personnel.

Medical Director

The Medical Director has authority over the entire AED program and its participants.

Medical Director: Dr. Lillian Avner
Martin Memorial Medical Center
300 Hospital Avenue
Stuart, FL 34994
(772) 223-5995

AED Coordinator

The AED Coordinator is an employee or agent of the Martin County School District and is the primary liaison between the AED program and the Medical Director. This person has responsibility for maintaining all equipment and supplies, organizing training programs and regular re-training programs, forwarding any incident data to the Medical Director and holding post-incident debriefing sessions for any employees involved. The AED Coordinator shall inspect the AED device during the annual safety inspection.

AED Coordinator: Safety Officer
Martin County School District
500 East Ocean Boulevard
Stuart, FL 34994
(772) 219-1200 x30364

AED Responders

Specific individuals are targeted and trained to use an AED in a sudden cardiac arrest emergency. These individuals are trained and operate under the direction of the Medical Director.

The list of targeted responders includes but is not limited to the following positions:

- Health Assistant
- PE Teacher
- Coach
- Athletic Director
- Plant Operator
- Night Custodial Lead
- Two Extended Day Staff
- Cafeteria Manager
- At least two administrative staff
- At least two teaching positions

There should be no less than 10 certified AED Responders for the school and employed by the school district or one of its programs at all times. Recertification of responders shall be every two years. The site contact person is responsible for notifying the Principal of the need to recertify and/or certify AED Responders to maintain the appropriate number of AED Responders. A list of the trained employees will be sent to the Safety Officer to have added to the on-line tracking system.

Inspection and Maintenance of the AED

Each site will have an AED contact person that will be responsible for doing the monthly inspection of the unit(s) and document this inspection through the on-line tracking system. The Safety Officer will monitor all sites to ensure monthly inspections are being done. If any aspect of the inspection does not pass, the unit will be taken out of service until the AED has been repaired or replaced. The manufacturer of the AED must be notified immediately. The AED Coordinator shall be notified immediately and an incident report will be completed and forwarded to the Medical Director.

After each use of the device, the following consumables must be replaced:

- *Electrode pads*
- *Pediatric pads*
- *Mouth barrier device*
- *Non-latex gloves*
- *Hand towel*
- *Razor*

AED Audit and Review

The AED Coordinator or Medical Director shall review each AED used for at least the following criteria;

- How was the call for help received?
- Response time to scene.
- Appropriate use of AED.
- Equipment properly and quickly setup according to protocol.
- Patient's pulse was checked according to protocol.
- Authorized individual properly identified.
- First shock delivered within 90 seconds of indication by AED device to initiate a shock.
- Adequate Basic Life Support maintained.
- Reassessment adequate following every shock.
- All protocols followed.
- Time care was transferred to Advanced Life Support (ALS) personnel
- Appropriate transfer of care to ALS
- Data properly transferred to Medical Control.

AED Protocol

Indications: AEDs should be used if a victim has signs of cardiac arrest:

- Unresponsive
- Not breathing
- No pulse or other signs of circulation

Special Situations/Critical Concepts:

1. Children:

Actions:

- Use Pediatric Pads if the victim is younger than 8 years or weighs less than 90 pounds.

2. Water:

Actions:

- Remove the victim from contact with water.
- Drag the victim gently by the arms or legs or use a blanket.
- Quickly dry the victim's chest before attaching the AED.

3. Implanted pacemakers or defibrillators:

Actions:

- Do not place an AED electrode pad directly over an implanted device.
- Place an AED electrode at least 1 inch to the side of any implanted device.

4. Transdermal medications:

Actions:

- Remove the patch and wipe the area clean before attaching the AED.

5. Metal Surfaces:

Actions:

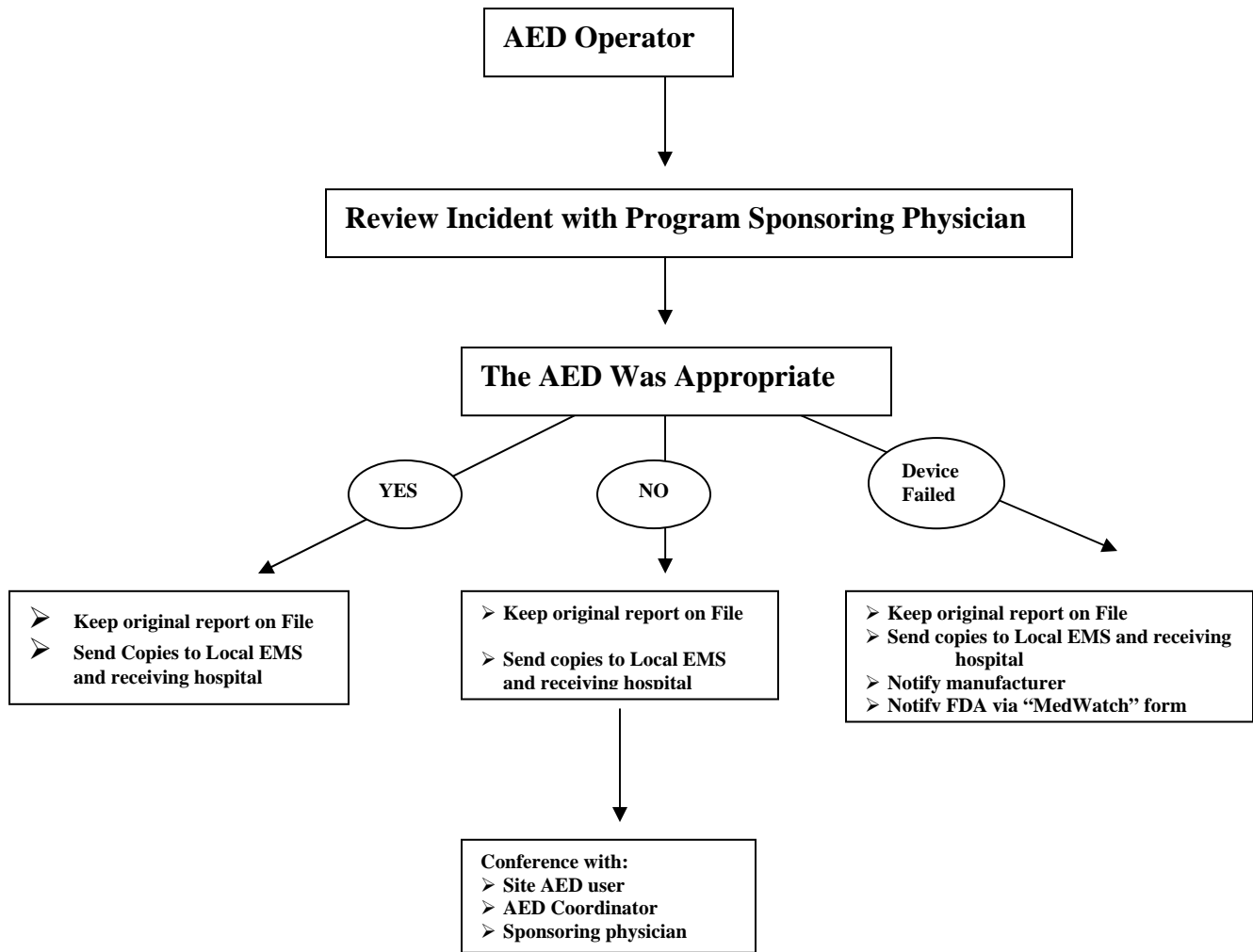
- Unnecessary to move the victim from a metal surface.

AED Medical Standing Order

***** Patient must be unresponsive, have no pulse, must not be breathing, and weigh 90 lbs. or more (unless Pediatric Pads are available) for AED application*****

1. If patient is unresponsive, call 911 (as necessary) and call for AED if it not already at the scene.
2. Assess ABCs
 - If patient is pulseless and apneic (no pulse, not breathing), follow steps #3 – 14.
3. Begin CPR until AED can be applied.
4. Turn on AED.
5. Attach electrode pads appropriately.
6. Stop CPR
7. Allow AED to analyze rhythm; follow machine's prompts.
8. Deliver up to 3 successive shocks if AED so advises; if no shock is advised, go to Step #9.
9. Reassess patient; if no pulse, perform CPR for 1 minute.
10. Allow AED to analyze rhythm; deliver up to 3 additional shocks if AED so advises; if no shock is advised, go to Step #11.
11. Reassess patient; if no pulse, perform CPR for 1 minute.
12. As long as AED advises to deliver shocks, repeat Steps # 11 – 12 until Advanced Life Support arrives.
13. Transfer data cassette/card/AED to transporting EMS agency prior to ambulance departure.

Automated External Defibrillator Quality Review Procedures



SCHOOL LETTER HEAD

DATE

*Martin County Fire Rescue
AED/CPR Team
6000 S.E. Tower Drive
Stuart, Fl. 34997
Atten: Doug Young*

RE: School Placement of Automatic Defibrillator (AED) Unit

Dear

Please be advised that an AED unit has been provided to our school and placed in the location indicated below:

SCHOOL NAME: _____

SCHOOL ADDRESS: _____

ROOM: _____

AED TYPE: _____

The staff have been advised of the location of the AED.

Please advise your staff of this information in the event that a rescue call involving this type of equipment occurs at this site. Should any further information be needed, or if I may be of any assistance, please call me at _____.

Sincerely,

Signature of AED Site Coordinator

Print Name of Site Coordinator

APPENDIX A

CC: Safety Officer